



MONTHLY MEMBERSHIP PROGRESS REPORT

District 325B2

Results as of: 8/31/2015

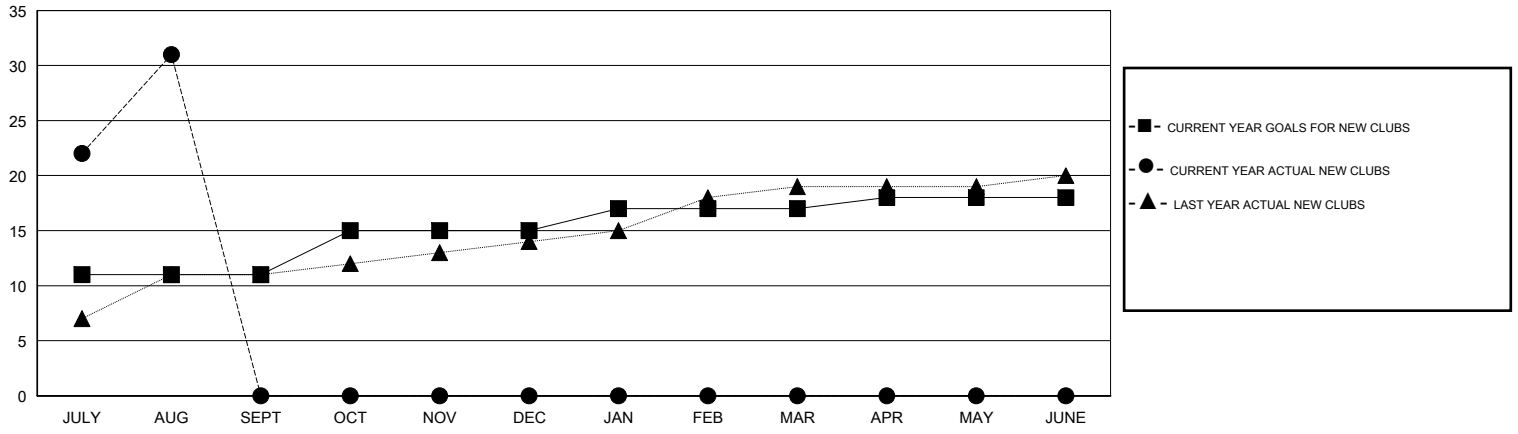
GMT: NAZMUL HAQUE

LOCATION NEPAL

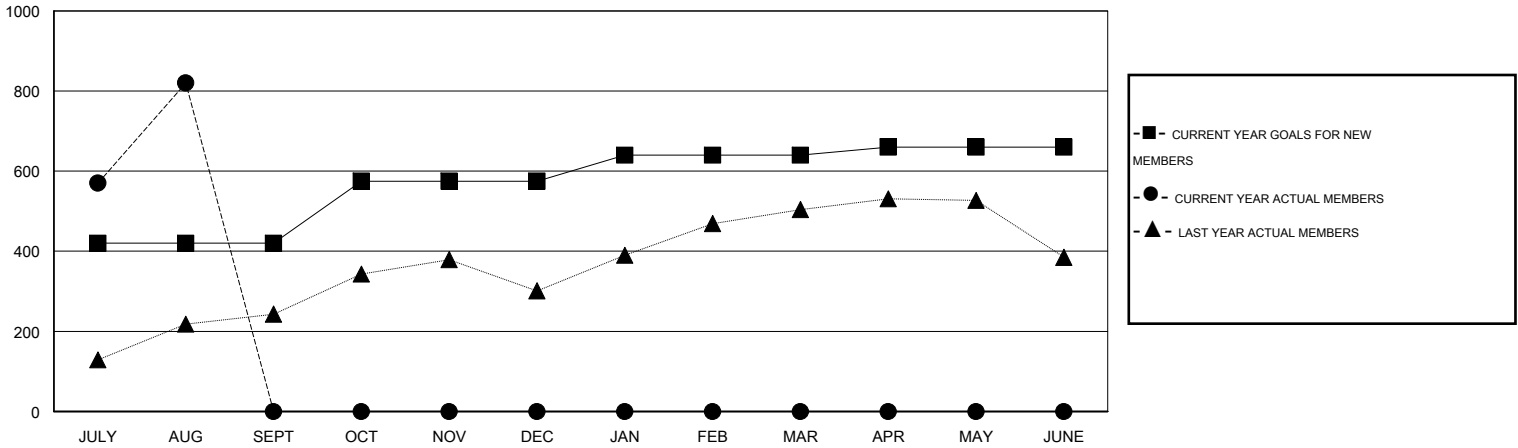
GMT CA 6

Clubs					Members				
RESULTS FOR 2015-2016					RESULTS FOR 2015-2016				
QUARTER	NEW CLUB GOAL	NEW CLUBS	DROPPED CLUBS	NET GAIN/LOSS	QUARTER	NEW MEMBER GOAL	CHARTER AND NEW MEMBERS ADDED	DROPPED MEMBERS	NET GAIN/LOSS
JULY/AUG/SEPT	11	31	0	31	JULY/AUG/SEPT	420	977	157	820
OCT/NOV/DEC	4	0	0	0	OCT/NOV/DEC	155	0	0	0
JAN/FEB/MAR	2	0	0	0	JAN/FEB/MAR	65	0	0	0
APR/MAY/JUNE	1	0	0	0	APR/MAY/JUNE	20	0	0	0

GOALS AND ACTUAL NEW CLUBS CUMULATIVE



GOALS AND ACTUAL MEMBERS CUMULATIVE



DROPPED CLUBS: 0	71 CLUBS OF 237 ADDED 1 OR MORE NEW MEMBERS	<u>GENDER DISTRIBUTION</u>							
<u>DROPPED MEMBERS</u>		MALE	4,652 (81.19%)						
DECEASED	2	FEMALE	1,078 (18.81%)						
CLUB CANCELLED	0	<table border="0"> <tr> <td>FAMILY UNIT MEMBERS</td> <td>2,670</td> </tr> <tr> <td>HEAD OF HOUSEHOLD</td> <td>1,039</td> </tr> <tr> <td>NON-HEAD OF HOUSEHOLD</td> <td>1,631</td> </tr> </table>		FAMILY UNIT MEMBERS	2,670	HEAD OF HOUSEHOLD	1,039	NON-HEAD OF HOUSEHOLD	1,631
FAMILY UNIT MEMBERS	2,670								
HEAD OF HOUSEHOLD	1,039								
NON-HEAD OF HOUSEHOLD	1,631								
OTHER	155	CLICK HERE FOR HEALTH ASSESSMENT DATA							
TOTAL	157								